

INSIDE:

News Nuggets.....	2
Sports Shorts.....	6
Wagon Train going to rodeo.....	7
Community Calendar.....	11
Event to feature local food.....	12
Heart health.....	12

Wesson News

SPOTLIGHT:

The Local Economy Special Issue

Pages 1, 5, 8 & 9

PRSR STD
U.S. POSTAGE
PAID
WESSON, MS
PERMIT NO. 3

Wesson News
PO Box 1028
Wesson, MS 39191

Volume 3, Number 2

"Good News You Can Use"

February 10, 2015

Wesson area economy looks good for 2015

By Bob Arnold

Citing declining unemployment and other positive economic indicators in Copiah and Lincoln Counties, economic development specialists are optimistic about the economic outlook in the Wesson area during 2015 and beyond.

Major employers in the area are expanding, gross sales are climbing,



Photo by Wesson News

Pictured l to r: Garrick Combs executive director of Brookhaven-Lincoln County Chamber of Commerce; Arthur Lee Evans, Jr., executive director of Copiah County Economic Development District; Angele Berch, Director of the Co-Lin Workforce Center.

Co-Lin gets \$2 million for training program

Through a \$2 million federal grant, Co-Lin is training workers on its Wesson and Natchez campuses in medium and heavy equipment and diesel mechanics and transportation. Oil industry companies engaged in development of the Tuscaloosa Marine Shale reserves in Southwest Mississippi will be among the beneficiaries

See full story on page 5.

retail activity is accelerating, and increasing numbers of companies are looking at the area to locate facilities, say Arthur Lee Evans, Jr., executive director of the Copiah County Economic Development District, and

Garrick Combs, executive director of the Brookhaven-Lincoln County Chamber of Commerce (BLCC).

At the same time, Co-Lin's Division of Career, Technical, and Workforce

cont. on page 2

Chamber seeks Wesson boosters

Special to Wesson News

The Chamber of Commerce is looking for Wesson boosters.

If you love Wesson and want to help promote it, you qualify for membership in the Chamber, local officials say.

While the mission of the Wesson Chamber of Commerce revolves around supporting local business and commerce, its specific tasks encompass just about anything that enhances the community and its quality of life. From its members, the Chamber is seeking both new project and event ideas and assistance with its current activities, including Founders Day, an annual banquet, and quarterly meetings.

Request the simple one-page Chamber of Commerce membership application from Melissa Meredith at 601-643-5000. Complete and return it to the Chamber of Commerce with a \$35 dues payment.

Co-Lin Natchez literary festival February 26-28

By Guest Columnist R. Shaw Furlow

For twenty-five years, the Natchez Literary and Cinema Celebration (NLCC) has been just that...a celebration of Mississippi's greatest authors, historians, film-makers and dignitaries. The tradition continues this year from Thursday, February 26, through Saturday, February 28. NLCC, which was started



Special to Wesson News

by Co-Lin in 1990 to raise the visibility of its Natchez campus, has been called "Mississippi's most significant annual conference devoted to literature, history, film and culture." Today, the Mississippi Department of Archives and History, the Natchez National Historical Park, and the Mississippi Humanities Council partner with it as sponsors.

As a fledgling event, NLCC got a huge break when Eudora Welty agreed to be the first presenter. Other notable artists followed her after that, and it became a big hit.

This year's conference, which is held in several venues throughout Natchez, has been built around the theme "Big-

ger than Life: Extraordinary Mississippians." Within this context, the event will celebrate the centennial year of Margaret Walker, and key presentations will focus on John Roy Lynch and LQC Lamar, William Faulkner, Miss Welty, Tennessee Williams, Willie Morris, Richard Wright, Jim Henson and others. Former Governor William Winter, who serves as the Director of Proceedings; Dr. Ronnie Nettles, president of Co-Lin; Malcom White, Director of the Tourism Division of the Mississippi Development Authority; US Senator Thad Cochran; and author Curtis Wilkie, among others, will be featured on the podium.

A highlight of this year will be Lun-

cheon a la Craig Claiborne at the Carriage House at Stanton Hall in Natchez. Claiborne, renowned as a food critic worldwide, is a native of Sunflower in the Mississippi delta and learned to cook in the boarding house his mother ran. After he returned from armed forces following World War II and the Korean War, he realized his true passion lay in cooking. He used his GI Bill to attend the Lausanne Hotel School in Lausanne, Switzerland. Returning to the U.S., he worked his way up the ladder in the publishing world to eventually become a contributor to *Gourmet Magazine*, a food editor, and a restaurant critic. He is

cont. on page 4

How would you like to have fun and creative pictures at your next event?
Then consider renting our brand new State-Of-The-Art Photo Booth!

www.PICTUREtheBOOTH.com

◆ 601-910-3001 ◆

cont. from front page

Wesson area economy looks good for 2015

Education is gearing up to meet growing needs for skilled labor in the area with plans to launch a new millwright training program on the Wesson campus in March.

"I am optimistic about the direction of the economy with key indicators suggesting growth," says Combs. He points to commercial real estate activity related to new retail stores and restaurants such as Georgia Blue and the recent start of American Railcar operations in Brookhaven.

Reflecting growing economic strength in the area as well, the Mississippi Department of Revenue reports sales transactions have been climbing throughout the year. In October 2014, gross sales in Copiah and Lincoln Counties were \$27,024,247 and \$102,876,408 respectively compared to \$25,870,506 and 96,133,515 in October 2013.

Perhaps most encouraging is the jobs picture. Unemployment rates are falling in both Lincoln and Copiah Counties. Lincoln County's 6.9 per cent unemployment rate is down from ten per cent in 2010 — the lowest among neighboring counties. Copiah County unemployment has fallen to 7.3 per cent from nearly 12 per cent in 2010.

In Copiah County, Evans reports "all our employers are doing well, we anticipate no layoffs in the coming months, and we're hopeful that new jobs will be created." Real estate hurdles connected with possible location of a new employer in a vacant building in the Copiah County Industrial Park (CCIP) at Gallman should

be navigated in early 2015, he says. "We're hoping for creation of twenty to twenty-five new jobs as a result," he adds. "Gulf Coast Renewable Energy has not started manufacturing wood chips in the industrial park, but continues to honor its leasing commitments, and we remain hopeful this will lead to another 20 to 25 new jobs. Fab Tech is also expanding its Hazlehurst warehouse facilities on more than four acres it purchased from Copiah County."

In Lincoln County, American Railcar Industries is creating an initial 25 jobs and investing \$10 million in a repair and maintenance facility that serves railroad companies. McClane Southern, which distributes grocery and convenience store products, is also adding 40,000 square feet of cold storage space to its 360,000 square foot Brookhaven operations.

Co-Lin's new millwright course, a response to labor needs of the more than 40 employers with whom it works throughout Adams, Copiah, Franklin, Jefferson, Lawrence, Lincoln, and Simpson Counties, suggests wider job creation. "A millwright is a jack-of-all trades in repair and maintenance," explains Angela Berch, Director of the Co-Lin Workforce Center. "Co-Lin will be providing levels one and two training of the National Center for Construction Education and Research (NCCER) millwright curriculums. The training will encompass Programmable Logic Controller (PLC), aligning and installing machinery, electric motors, leveling, and basic welding."



Special to Wesson News

Co-Lin also expects to meet growing area labor needs through existing training programs, particularly in welding, truck driving, nursing assistant certification, and heating, ventilating, and air conditioning, Berch says. "Our Career and Technical credits program in welding has a waiting list because its graduates have so many options not only in local machine shops, but outside the area as well, and in onshore and offshore oil and gas operations." (See story on page 9.)

Looking toward the long-term future, Evans and Combs both say they maintain active lists of employers that would build on the current economic foundation in the Wesson area. Combs believes increasing willingness of companies to invest in expansion are good omens.

In Lincoln County, Combs says

employers in forestry products; metal fabrication related to needs of the automobile industry, which has manufacturing facilities scattered throughout the South relatively close to Brookhaven; finance, insurance, and real estate; and healthcare are BLCC marketing targets. Evans' targets for Copiah County are related to the poultry, timber, and gravel industries, which encompass the county's current primary employers.

Industrial parks are important selling points for Evans and Combs in attracting employers. CCIP offers some 300 acres for development and currently is the home of Advance Auto Parts, Axiall Chlorovinyls, DG Foods, Jones Lumber, National Textile, and Sanderson Farms. BLCC markets two industrial parks in Brookhaven — Linbrook Business Park, a relatively new one at the west end of Brookway Boulevard near Home Depot, which offers 400 acres for development; and a nearly full development on Industrial Park Road where 2,000 workers are employed by Delphi Packard, distribution centers for Walmart and McClane Southern, American Railcar Industries, and others.

"Since the Great Recession, companies have been cautious about investment nationally," says Combs. "They've been sitting on cash and stretching existing resources — facilities and labor — rather than investing in expansion. The increasing inquiries we're getting from companies about sites for new facilities indicate this may be changing."

Skeetburger in Beauregard
Best Burger in Town
 Salads, Baskets, Plates lunches,
 PoBoys & Beverages
 Tu-Th 11-7 • Fri-Sat 11-8
 Closed on Sundays and Mondays
601-643-0048
 Checks and all major credit cards

DoGood ProHealth Associates, LLC
 For your AHA CPR and First Aid training needs
Dr. Stephanie Duguid, ATC
 Owner
 PO Box 844, Wesson, MS 39191 **601-669-6784**
 dogoodprohealth@hotmail.com

CURBSIDE SERVICE

IBANE DRUGS

Serving the Brookhaven-Wesson area for 60 years!

BROOKHAVEN, MISSISSIPPI
 Next to Piggly Wiggly, across from Mississippi School of the Arts
 Mon – Fri 8 am – 6 pm / Sat 9 am – 1 pm
601-833-1922

Give your loved ones peace of mind with life insurance. Why wait until it's too late?



Jennifer Barnett



Christy Smith

Barnett
GROUP
Insurance Specialists

707 Brookway Blvd., Brookhaven, Mississippi
Find us "On the Boulevard" next to Walgreens.

601-833-0830 • 601-833-9713 fax | jbnarnett@barnett-group.com



Remember at
BANK OF BROOKHAVEN
...it's all about you!

"HOME BANKING" 601-833-6494



24 HOUR ATM...
INTERNET BANKING
Member FDIC

www.bankofbrookhaven.com

601-835-3033

411 BROOKWAY BLVD

News Nuggets

Special to Wesson News

Adult learners network at Co-Lin. ALPHA (Adult Learners Pursuing Higher Achievement) Wolves, a new organization designed for first-time and returning students at Co-Lin, is providing a venue for older students, who share similar educational goals and challenges ranging from issues related to juggling school and study with work or commuting to campus, and networking to share and discuss their mutual concerns and interests, and develop problem-solving strategies together. For information, contact Randy Castilaw (601-643-8713) or Dianne Brown (601-643-8262).

Beautification volunteers. Keep Lincoln County Beautiful, a not-for-profit organization affiliated with Keep Mississippi Beautiful, is seeking volunteers who want to help control litter and care about the appearance of local highways and byways. Call 601-833-4126 for information.

Blood need. Mississippi Blood Services reports an extremely low blood inventory and is seeking donors of all blood types for whole blood, double red cells, and platelets. Every second and fourth Monday between 1 p.m. and 6 p.m., blood can be donated at the King's Daughters Medical Center Hospital Annex in Brookhaven.

Co-Lin rated top military-friendly school. Military Advanced Education (MAE) has designated Co-Lin a Top School in its 2015 MAE Guide to Colleges & Universities for best practices in military and veteran education. The Guide presents results of a questionnaire about military-supportive policies completed by community colleges, four-year institutions, online educational venues, and other nationally known centers of higher learning. Students can access the guide, which provides information about institutions that go out of their way to support men and women in uniform, in the December, 2014, issue of MAE and through a searchable online database (www.mae-kmi.com). MAE evaluated institutions on their military culture, financial aid, flexibility, and on-campus and online support services. Published ten times a year, MAE serves education services officers (ESOs) and transition officers (TOs) at every U.S. military installation, along with the service members they counsel. Its editorial coverage includes exclusive interviews with military executive leadership, educators, and members of Congress; best practices; career and transition spotlights; service member, school, and program profiles; and periodic special reports.

Conference for diabetics. An array of nationally-renowned specialists

cont. on page 9



Sports Bar & Restaurant

505 West Monticello Street • Brookhaven

601-990-2366

Brisket • Burgers • Baby Back Ribs • Chicken • Pulled Pork
Full Service Bar • Big Screen TV • Tuesday Night Trivia Teams

Live Music Friday & Saturday 8 p.m. No Cover

3 p.m.-10 p.m. Monday-Thursday || 3 p.m.-Midnight Friday || 11 a.m.-Midnight Saturday
Large Group Lunch Takeout Service Monday-Saturday (call a day in advance)

FasTaxx of Brookhaven

"The Fastest Place Around"

Jewel Bland, Owner

Preparation and Electronic Tax Filing
Rapid Refunds, Direct Deposit

1023 West Congress in Brookhaven

601-833-2414 & 601-265-9422

601-835-3196 FAX

fastaxx1@juno.com

Ryan Repair Shop, LLC

AUTOMOTIVE MAINTENANCE & ATV REPAIR

Patrick Ryan, Owner

1024 Main St • Wesson MS



601-835-6085

cont. from front page

Co-Lin Natchez literary festival

author of several cookbooks and promoted then-unknown chefs such as Paul Prudhomme.

Rick Cleveland, Director of the Mississippi Sports Hall of Fame, will discuss "Mississippi Sports: A State of Legends." There will be a gala benefit/reception honoring all the award winners and speakers at King's Tavern, the oldest building in Natchez.

On Thursday evening, there will be a pre-conference screening of the coming of age award winning movie, *Mud*, written and directed by Jeff Nichols of Austin, Texas. Nichols will receive the Horton Foote Award for special Achievement in Screenwriting at the conference. Grammy Award-winning Glen Ballard, a Natchez native now of Los Angeles, will also receive the Horton Foote Award. You may not know his name, but I am sure you know his work, which includes lyrics for Paula Abdul, Wilson Phillips, the Dave Mathews Band, Stevie Nicks, Ringo Starr and one of my all-time favorites — Michael Jackson's *Man in the Mirror*.

On Saturday evening, music historian Ted Giola of Dallas, Texas, will host a multi-media event, *How Mississippi Changed the Music World*, which will include a performance of *First Came the Blues* by blues musician Vasti Jackson of Hattiesburg. Jackson is the Mississippi Development Authority's Cultural Ambassador. I know and have worked with Vasti and can assure you that his show will be electrifying. He is a member of the Mississippi Musicians Hall of Fame and a great guy.

Saturday is "Family Day" at the conference because food, sports, film, and music will be the focus of NLCC, according to event Chairman Carolyn Vance Smith. "We are inviting entire families to spend the day at the conference," she says.

Smith, who originated the conference with Dr. Howell Garner, then Vice

••INFOBOX••

NLCC's program will run from 9 a.m. to 10 p.m. on both Friday and Saturday, February 27 and 28. The speaker presentations are free to the public. Tickets must be purchased for a Luncheon a la Craig Clairborne on February 27 (\$25), a musical presentation honoring Margaret Walker on her centennial birthday by the New York City and Jackson State Chorale on February 27 at 7:30 p.m. at Trinity Episcopal Church (\$10), and the gala benefit reception/dinner honoring award winners and speakers on February 28 at 5:30 p.m. at King's Tavern (\$145, with \$100 tax-deductible). A reception at the Natchez Museum of Afro-American Culture on February 27 at 5 p.m. is \$10 at the door.

President of the Co-Lin Natchez campus and later to come to Wesson as President of Co-Lin, will end her tenure as Chairman of NLCC and be honored at a reception on Saturday for her work. Although she is stepping down after twenty-six years, Smith will remain an active conference participant.

For more information and a complete list of events, times and locations, visit www.colin.edu/nlcc or email NLCC@colin.edu. Call 601-646-1289 or toll free at 866-296-6522.

Until next time...support live music.

Editor's Note: R. Shaw Furlow is Director of the Bands Program at Co-Lin and oversees the college's Community Arts Series.



COPIAH BANK

"Make Our Bank Your Bank"®

2048 Hwy. 51 South | Wesson
643-5121 | copiahbank.com

MEMBER
FDIC

Other locations: Byram | Clinton | Crystal Springs | Florence | Hazlehurst | Richland



7.H.Perkins

FURNITURE

Tax Refund & Refurnish Sale

12 Months No Interest W.A.C, Minimum Purchase

www.thperkinsfurniture.net • Brookhaven • 601-833-1143
Best Selection, Best Quality, and Best Price in Southwest Mississippi for 127 Years

Shopping for your Valentine?

We do beautiful rose bouquets,
balloons, candy, stuffed animals,
cards, coke packs & the works!

Great Gifts. Beautiful Candles! Call ahead. Drop in.

If you forget, we are here late!

Free Local Delivery & Free Courtesy Gift Wrapping.

Monday-Saturday 10 a.m to 5 p.m.

All major credit cards accepted.

Another Time Another Place

Downtown Wesson, MS 601-643-2500

LIKE US ON FACEBOOK



SHOP N WASH (BP)



WESSON, MS.

LIVERS

GIZZARDS

HUNTS PIZZA

CHICKEN ON A STICK



P.O. Box 1028
Wesson, MS 39191

601-990-3003

ClayMansell@WessonNews.com

Volume 3, Number 2
Circulation 5,000

Publisher/Editor

Clay Mansell

Editor

Bob Arnold

Design/Production

Bill Pitts

Staff Writers & Photographers

Mike Christensen

Marie Watts

Special Contributors

Dr. Stephanie Duguid

Healthy Living

R. Shaw Furlow

Area Arts

Sales

Bob Arnold

Glenda Gemelli

Wesson News is published on the
second Tuesday of every month
in Wesson, Mississippi.

For submission information, email
ClayMansell@WessonNews.com

Copyright © 2015 All rights reserved.
Materials may not be reproduced
in whole or in part without written
permission of the publisher.

For reprints of any article, please contact the editor.

www.WessonNews.com



Police Blotter

Special to Wesson News

During January, the Wesson Police
Department activity encompassed:

Response to:

- One armed robbery complaint
- One sexual assault complaint
- Six traffic accidents
- Two domestic violence incidents
- Two telephone harassment complaints

Citations & arrests for:

- Nineteen traffic violations
- Thirty-four speeding violations
- Ten possession of controlled substances
- One family disturbance
- One simple assault
- One DUI (second offense)
- One contempt of court
- One possession of beer

On school days, the Wesson Police
Department facilitates traffic flow
at Wesson Attendance Center with
officers on duty between 7 a.m. and
8 a.m. and 3 p.m. and 3:30 p.m.

\$2 million grant to prepare workers for oil & port jobs

Special to Wesson News

Co-Lin has received a \$2 million U.S. Department of Labor-Department of Education (USDL-DE) grant for training programs on the Wesson and Natchez campuses in medium and heavy equipment and diesel mechanics and transportation-related careers to meet job needs in operations at the Natchez Port and the Tuscaloosa Marine Shale reserves in Southwest Mississippi.

The grant is part of a total three-year Trade Adjustment Assistance Community College and Career Training (TAACCCT) \$10 million Southeastern Transportation Network training grant awarded to a multi-state consortium, including Lawson State Community College, the lead institution based in Birmingham, Alabama, Atlanta (Georgia) Technical College, and Central Louisiana Technical College at Alexandria, Louisiana, for colleges to develop Centers of Excellence that prepare workers for jobs in the transportation sector. In Mississippi, only

Co-Lin and East Central Community received TAACCCT funds. Two years ago, Co-Lin received some \$860,000 through the same grants program to expand its career and technical course and purchase new equipment.

Throughout the U.S., some 270 community colleges received \$450 million in TAACCCT funds.



Special to Wesson News

Eric Clark, Executive Director of the Mississippi Community College Board, called the grant “a victory for Co-Lin and a victory for Mississippi.” “It will let the college train our citizens to maintain transportation equipment

that supports the coming ‘oil boom’ as well as the Port of Natchez.”

“We are very grateful for the local support from employers and others in the Natchez and Adams County area,” said Jackie Martin, Co-Lin’s Dean of Career, Technical, and Workforce Education. “The funds will assist us in closing the skills gap. It’s a huge opportunity for not only our college, but for the local transportation industry and economy.”

Mississippi Governor Phil Bryant described workforce development at the community college level as “a vital part of growing Mississippi’s skilled workforce” -- “the first thing any company looking to expand asks about when exploring new areas.” He credited economic development successes like Yokohama Tire’s decision to locate in Mississippi to training and career tech programs at the community college level in Mississippi and said the TAACCCT grant money “will be instrumental in expanding these efforts” at Co-Lin and East Central.

Southern Welding Supply, INC.

676 Industrial Park Rd NE, Brookhaven 601-833-5037

**New Shipment of
TRAILERS
Just Arrived**



**PORCHES
RESTAURANT**

*Now Taking Reservations
For Valentine's Day*

*Friday Evenings at:
5:30 - 8:30 p.m.*

601-643-9035

PORCHES RESTAURANT
1193 HIGHWAY 51
WESSON, MS

51 Diner

**Good Home Cooking
Dine-In or Takeout**

**1096 Highway 51
Wesson, Mississippi 39191
601-643-5100**



CRAFTSMAN
STIHL

WESSON ACE HARDWARE

2057 Hwy. 51 South • PO Box 547
Wesson, Mississippi 39191
wessonacehardware.com

YETI
COOLERS

TIM SUTTON – owner
601-643-2636
601-643-9906 fax
601-695-4144 cell

BENCHMARK

PLEASE RECYCLE.
IT'S THE SMART THING To Do!



Sports Shorts



Photo by Wesson News

Co-Lin 2015 football recruits enjoyed luncheon at Thames Center as part of their introduction to the school. They toured the campus, met Co-Lin officials, and had their questions answered before signing to play football with the Wolf Pack next season.

Special to Wesson News

All-Star Team Pick. Wesson High School (WHS) basketball junior forward Anthony Jones, averaging 20.9 points per game as his team's leading scorer, will play in the Mississippi Athletic Conference (MAC)/Mississippi Sports Medicine and Orthopaedic Center All Star Classic at the A.E. Wood Coliseum on the campus of Mississippi College in Clinton on Friday, March 27. WHS basketball coach Rusty Newman called Jones "a great player and a great young man on and off the court" and a "major contributor" in his team's success this season.

Co-Lin lands local shortstop. Senior Wesson High School softball standout Kayla Britt has accepted a scholarship from Co-Lin to play softball with the Lady Wolves. Britt, the daughter of Landon and Teresa Britt, played catcher and shortstop for the Lady Cobras soft-

ball team at Wesson Attendance Center. She also plays on the Lady Cobras basketball team. Co-Lin softball coach Allen Kent said Britt "can play almost anywhere on the field," and "handles the bat well and is eager to learn more."

Pee-Wee basketball. Wesson Attendance Center (WAC) started its Pee-Wee basketball program for kindergarten through sixth grade this past Saturday. Kindergarten and first grade, second and third grade, and fourth through sixth grade play together. Children in each group learn basketball fundamentals before games start. K-3 teams play half court games and fourth to sixth grade teams play full court. The program, which continues through February, is the foundation for building the WAC basketball program, coaches say. The cost for each child in the program is \$40, which covers a shirt, end-of-season trophy, the practice/instructional sessions, and games.

Scores:

Co-Lin basketball. Men. Jones 89-Wolves 71; East Central 78-Wolves 63; Wolves 57-Southwest 54; Meridian 67-Wolves 65; Co-Lin 76-Hinds 58; Pearl River 65-Co-Lin 55; Jones 85-Co-Lin 70. Women. Wolves 91-Jones 74; Wolves 81-East Central 71; Wolves 77-Southwest 55; Wolves 82-Meridian 64; Co-Lin 92-Hinds 43; Co-Lin 51-Pearl River 38; Co-Lin 93-Jones 92.

Co-Lin softball. Co-Lin 11-Delta 0; Co-Lin 12-Delta 0.

Wesson High School varsity basketball. Boys. Loyd Star 75-Cobras 63; Cobras 74-Puckett 48; Cobras 62-Hazlehurst 57; Cobras 73-Franklin County 65; Crystal Springs 73-Cobras 52; Cobras 76-Wilkinson County 71; Cobras 83-Jefferson County 79; Hazlehurst 71-Cobras 69; Franklin County 61-Cobras 48. Girls. Loyd Star 48-Cobras 37; Cobras 60-Puckett 59; Hazlehurst 49-Cobras 47; Franklin County 59-Cobras 49; Cobras 41-Crystal Springs 23; Cobras 51-Wilkinson County 47; Jefferson County 67-Cobras 49; Cobras 58-Hazlehurst 48; Franklin County 52-Cobras 46.

Wesson High School varsity soccer. Boys. Cobras 5-Natchez Cathedral 2; Cobras 2-Brookhaven 0; Cobras 2-Lawrence County 0; Cobras 2-Natchez Cathedral 1; Cobras 2-Loyd Star 1. Girls. Cobras 3-Natchez Cathedral 2; Cobras 1-Brookhaven 0; Cobras 1-Lawrence County 0; Natchez Cathedral 3-Cobras 0; Cobras 3-Loyd Star 2.

cont. on page 9

Michael Jackson ESTIMATOR

BEALL'S BODY SHOP

206 Georgetown St. Hazlehurst, MS

PH: 601-894-4777 • FAX: 601-894-4721 • TOWING PAGER: 601-306-2364

Bank of Franklin

721 Brookway Blvd
Brookhaven, Mississippi
24 Hour Teller: 601-990-3045
Phone: 601-990-3020
www.bankoffranklin.com

BULL DOZER SERVICE

- Clear & grade lots
- Food plots & shooting lanes
- Remove stumps & vegetation
- Demolition — barns & houses
- Build ponds & lakes

Track hoe & dump truck used as needed. Free estimates. We only charge for time our equipment is operating.

Call Ike Jerome/Wesson, MS
601-643-2249 or 601-695-0352
As Good as the Best & Better than the Rest

Become an **AVON** Independent Sales Representative!

Only \$15 to start!

THE COST OF LUNCH COULD CHANGE YOUR LIFE

Set your own hours! Unlimited earnings!

Work from home! No inventory to keep!

For more information, contact Julia at
601-643-2704
www.youravon.com/juliaarnold • 113streetman@msn.com

JUDY'S DISCOUNT SHOES

♥ **75% Off** Selective Boots ♥

Snow Boots in Various Colors **\$10.00**

Children's and Infants' Boots **\$10.00**

50% Off Selected Prom Shoes

Come in & Check out our LOW PRICES

116 S. Whitworth Street (Downtown Brookhaven) • 601-833-4192

Rug Cleaning Offered

Rugs can be dropped off and picked up at Pete's Interiors, or picked-up and delivered for an additional charge.

Call 601-835-1703 for details.

Pete's
INTERIORS 1342 Hwy. 51N. • Brookhaven, MS 39601

Wesson Wagon Train is on its way to the rodeo

Wesson News

The Wesson Wagon Train — one of eight Mississippi groups that travel to the Dixie National Livestock Show and Rodeo the old fashioned way on horseback and in non-motorized wagons, carriages, buggies, and surreys pulled by horses and mules — rolled out of Wesson for the thirty-first consecutive year this past Saturday on its annual 70-mile trek to the Jackson Mississippi Coliseum event.

Some twenty wagons and more than a hundred horseback riders departed

on the six-day journey. They will travel the back and interstate frontage roads ten to fifteen miles each day, camp out at various locations during the evenings, and arrive in Jackson this Thursday. The wagon train includes participants from throughout the region, as well as local people. Three retired men from the Norwood and Independence areas in Louisiana traveled one hundred miles in their wagons to Wesson to join the train.

At Jackson, the wagon train's participants will take in the last of the livestock shows, which started Janu-



Special to Wesson News



Special to Wesson News

ary 24, and see the rodeo events, which begin at 7:30 p.m. Thursday and run through February 22. They will come together again to compete with other wagon trains in the Dixie National Parade at 10:30 a.m. Saturday on Capitol Street in Jackson. Since 1985, when Horace Smith started the local group, it has placed first, second, or third in the wagon train parade competition.

“Last year, we placed third and are looking to place first this year,” says Randy Hutson, who leads the Wesson train as wagon master along with


William Allen and assisted by Brad Turner

The wagon train groups across the state are not clubs, but rather once-a-year opportunities for families — parents, children, and youth — to socialize with others who share their interests in horses, horse-drawn transportation, camping, and the rodeo; and make or renew friendships.

“It’s all about having fun,” says Hutson. “Instead of going to Bermuda for a week, we go to the rodeo utilizing Nineteenth Century transportation.”

VOTE BECKY CURRIE

REPRESENTATIVE DISTRICT 92



It has been my honor to serve the people of District 92. I am again announcing my candidacy to continue serving you and I'm asking for your support.

Becky Currie

WAND SEED STORE



Baby Chicks Arriving Soon




One-Stop Shopping for Livestock & Pet Feed & Supplies

403 Highway 51 North, Brookhaven, MS 39601 • 601-833-7561



DOWNLOAD OUR APP TODAY!

You'll get events, breaking news, business locations, step-by-step directions to us, and much more.









Brookhaven-Natchez train discussion focus

Special to Wesson News

State Representative Bobby Moak, Democrat-Bogue Chitto, plans to introduce a bill in the Legislature to speed development of passenger train service between Brookhaven and Natchez and passing through Meadville, Bude, and Roxie.



Special to Wesson News

Train depot at Brookhaven.

Moak, who introduced a similar bill which failed in the 2014 Legislature, announced his latest plans after Southwest Mississippi officials from Adams, Franklin, and Lincoln Counties discussed the prospective railroad service at a recent meeting.

Moak's bill would authorize the Mississippi Development Authority to take out bonds for the purchase of passenger cars for the proposed line.

Natchez Mayor Butch Brown said

the Brookhaven-Natchez train could be an "excursion line" for people taking day trips.

"When we have our Tricentennial in 2016, day trippers are going to be needed because we are out of rooms," Brown said. "Sixty-five percent of the population in the United States is within 500 miles of Brookhaven — within driving distance."

Meadville Mayor Lane Reed said the effort to get the passenger line started has been a partnership between the leaders of all the areas that will be affected by it.

"We have realized that what is good for Natchez is good for Meadville, and what is good for Bude and Brookhaven is good for Franklin County and Roxie," he said. "This has been talked about all over the state, but nobody has the resources we have in Southwest Mississippi."

Brookhaven has a railroad depot, while Natchez has a federal transportation hub, Reed said. Bude and Meadville likewise have historic ties to the railroad.

Many details remain, including what organization will be responsible for the rail line and logistics related to transporting passenger cars.

A testimonial from a mother and a former student!

Dear "Miss" N,

It's been almost five years since I first brought Dacey to your studio. She was an awkward, clumsy, Tom-Boy (the result of having three brothers). I remember after her first recital being amazed at the charming and graceful young lady she's been transformed into. Now all these years later I continue to be in awe of who she is and who she is becoming. Your influence in her life is responsible for a great deal of that. I can never thank you enough! It is my prayer that as you invest in the lives of all the "Awesome Nena Smith Dancers" it will be reaped ten-fold in the lives of your children and grandchildren. Thank you for the integrity you live by and teach with. Thank you for teaching our "Jewel" CHARACTER FIRST – DANCE SECOND.

Love you so much, Samantha Sivils

"Miss" Nena,

Thank you for everything! You have taught me so much. Not only dance, but character and faith. Every year I learn more and more about life from you. You are such an inspiration to me. I love our Fellowship Of Christian Dancers time each week. I love your crazy, Bohemian, funky spirit. It is much like mine. You SHINE God's light in all you do.

I love you to the moon and back, Dacey

NENA SMITH'S SCHOOL OF DANCE

Where leaders are made!

For more information, call us at 601-643-2406

Wesson, Mississippi

HUNTINGTON
LUMBER & SUPPLY COMPANY, INC.

Own Your Home in one of
Mississippi's Most
Livable Towns

Cottages of Wesson
\$115,000
Call us for details

601-894-3171 • Open Monday – Friday 7:30 – 6:00 & Saturday 8:00 – 5:00
124 W. Whitworth Street • Hazlehurst, MS 39083 • huntington.doitbest.com

**CATTLE
BUYING YARD**

Buying All Classes of Yearlings & Calves

NO COMMISSION & NO SHRINK

Every Monday: 7 a.m. – 12 p.m.
Or By Appointment

CALL FOR DIRECTIONS
Levi Rogers: 601-315-1009

Hwy 28, 7 Miles West of Magee, Mississippi

Co-Lin welding program gets up-dated equipment

Wesson News

New state-of-the-art equipment is facilitating instruction and introducing students to the latest technologies in the Co-Lin welding program on the Wesson campus.

Co-Lin's Wesson and Natchez welding programs shared approximately \$100,000 for equipment and facilities upgrades through one-time funds allocation by the state legislature to Mississippi's 15 community colleges for workforce training.

On the Wesson campus, funds financed purchases of Lincoln Electric Invertec multiple processing welders, Miller Electric TIG welders, Miller Electric suitcase wire feeders, a CNC (Computer Numerical Control) plasma cutter, and renovation of work booths.

Co-Lin welding shop has added high-tech precision equipment as a result of one-time funding allocation by the state legislature for workforce training at Mississippi's 15 community colleges.

"Our students are now learning on high-tech precision equipment," says Daniel McKinnon, Jr., welding program coordinator/instructor on the Wesson campus. "The multiple process welders allow students to practice MIG,

TIG, flux core, stick, and other welding techniques with one piece of equipment rather than separate single process equipment, which we have taken out of operation. On the CNC plasma cutter,

they learn to program a computer, employing a user-friendly application, to control a torch which cuts metal parts."

McKinnon, a Gainesville, Florida, native, came to Co-Lin a year ago after a career which encompassed offshore, power plant, and refinery welding experience, and teaching welding at vocational-technical school at Crawley, Louisiana.

cont. from page 6

Sports Shorts

Upcoming events & games:

- February 10** Wesson Attendance Center Junior Varsity and Varsity High School Basketball Cobras play Crystal Springs. 5 p.m., 6 p.m., and 7:30 p.m.
Senior Scramble at Wolf Hollow Golf Club on Co-Lin's Wesson campus is every Tuesday at 9 a.m. Entry deadline is 8:30 a.m.
- February 12** Co-Lin women and men Basketball Wolves play at Southwest. 5:30 p.m. and 7:30 p.m.
- February 13** Wesson Attendance Center girls and boys Varsity plays Wilkinson County. 6 p.m. and 7:30 p.m.
- February 16** Co-Lin women and men Basketball Wolves play Meridian. 6 p.m. and 8 p.m.
- February 17** High School basketball tournaments & playoffs start.
- February 23** Community college basketball tournaments start.

cont. from page 3

News Nuggets

will discuss various aspects of diabetes and its care at the Diabetes Foundation of Mississippi's (DFM) 36th annual family Super Conference on Saturday, February 21, 2015, at the Marriott Hotel and Conference Center in Jackson. The day-long event features national and local clinicians, researchers, and diabetes advocates who will provide information and answer questions for people with Type 1 and Type 2 diabetes, their families, caregivers, and health professionals who work with diabetic adults and children. A mini session of Camp Kandu is available for diabetic children and their siblings or friends, and Chef Nick Wallace will present a healthy cooking demonstration. Representatives from medical and pharmaceutical companies will showcase the latest diabetes management products and programs. Registration starts at 7:45 a.m., and the general session will begin at 8:30 a.m.

Dulcimer festival. A dulcimer contest and workshops on mountain dulcimer, hammered dulcimer, psaltery, ukelele, steel drums, and autoharp are features of the Southern Springs 2015 Dulcimer Festival on Friday and Saturday, February 20 and 21. William Carey University in Hattiesburg is hosting the event. Workshops are scheduled on both days, and the fourth Deep South Dulcimer Championship will be held at the campus auditorium on Saturday.

Home schooling support group. Brookhaven Home Educators, a Christian home school support group, provides academic and fellowship support for students in home schooling and their families. Email free608@gmail.com for information.

KDMC recognized for obstetrics. Kings Daughters Medical Center in Brookhaven has received the 2015 Women's Choice Award for one of America's Best Hospitals of Obstetrics

based on female patient satisfaction, clinical excellence, and actual comments about the hospital by women. More than 350 hospitals across the nation received the awards, which mean women can feel confident in choosing them for their maternity needs.

Obamacare enrollment assistance. Local residents who are considering purchasing health care insurance online under the Affordable Care Act (or "Obamacare") but are confused by the application process can find help at Kings Daughters Medical Center (KDMC) in Brookhaven through the current enrollment period, which ends February 15. KDMC Medical Advocacy Services for Healthcare representative Jerri McGee conducts an initial screening process, which looks at household income, and assists in completing online profiles, setting up email accounts, if necessary, selecting plans, and applying for them. Call McGee directly at KDMC for information or to set up an appointment.

Technology help for small business. A free webinar series produced by the Mississippi State University Extension Service, Mississippi Main Street Association, and Mississippi Development Authority Entrepreneur Center will offer business assistance on using technology to increase sales and customer satisfaction. The four webinars will cover Mobile Payment Processors (February 12), Crowdfunding (March 12), Online Customer Service (April 9), and Website Development (May 14). The webinars begin at noon and end by 12:50 p.m. and are accessible through community groups at host sites across the state or online directly. Participants can attend individual sessions or the entire series. For more information, contact the Brookhaven Extension office (601-835-3460) or Mississippi Main Street Association in Jackson (601-944-0113).



**Brookhaven
Funeral Home**
"A Family Serving Families"

Why Do People Prearrange?

By prearranging, the choices are yours to make. A prearrangement allowed loved ones to know how you wish for your service to be conducted and any special requests that you may have.

With over 100 years of experience, we can assist you with the details and the many benefits of prearranging. When you prearrange, you pay at today's prices and are guaranteed the price will not increase. We will be glad to discuss our flexible payment program with you. Call our Pre-Need Consultant Wayne Smith at 601-833-1441.

Brookhaven Funeral Home, Inc.

894 Natchez Dr. & 230 N. Jackson St., Brookhaven • 601-833-1441 • www.brookhavenfuneralhome.net

Blues musicians are focus of photo exhibit



Photo by Wesson News

Special to Wesson News

Upwards of fifty historic photographs from George Mitchell's book *Mississippi Hill Country Blues 1967* were displayed last month in a special Brookhaven Regional Arts Guild (BRAG) exhibit at Lincoln County Public Library.

Mitchell's 2013 book documents his 1967 trip to Mississippi, where he searched for then-unrecorded blues musicians, including R. L. Burnside, Jessie Mae Hemphill, and Othar Turner. His journey yielded recordings of music now on cherished and touted albums and CDs, provided a foundation from which many others discovered the region and its distinctive style of blues, and transformed the lives of musicians he recorded for the first time.

His photographs tell the story of a unique style of blues—a different kind of music that was played in the north Mississippi counties of Marshall, Tate and Panola in the summer of 1967, a special flavor of blues

with hints of Appalachian and African influences that musicians say is distinct and isolated compared to the more popular Delta blues. Intimate, without posturing or pandering, they provide a raw, authentic look at African American blues musicians, their families, and their stomping grounds in the Mississippi Hill Country at a time when blues music remained a lively, though waning, part of their community and blues musicians were viewed with respect and pride. The photographs capture subjects who welcomed Mitchell in their homes and at rent parties and fife and drum picnics, posing for portraits and letting him hang around with his camera while they cooked supper or danced up a storm.

"It is often said that blues was born in Mississippi, and this may be true," author, journalist and blues aficionado Mitchell writes in his book. "Where a harsh life afforded no other means for providing entertainment, gaining prestige or shedding frustrations, the blues filled a vacuum."



Full-Service Bar
Sizzling Steaks
Gulf Shrimp
Oysters
Catfish
Crawfish
Chicken

Happy Hour:
Mon-Fri 4 to 6 pm
Dinner Served:
Mon-Thurs 5 to 10 pm
Fri & Sat 5 to 11 pm

3135 Hwy 51 N • Summit • 601-276-7517



Dixie Springs
Cafe

Major Credit Cards Accepted. Exit 24/Lake Dixie Springs off I-55. Left from exit ramp, half a mile to Highway 51, then 1.2 miles on your right.



C & B
Propane Bottle
Refill Service
601-754-0927
Ask for Brenda or Curtis

BYRON'S CUTS & STYLES

SPECIAL \$12.00
HAIR CUTS WITH DESIGN
SPECIAL GOOD FEB. 10TH - MAR. 9TH

117 WHITWORTH AVE. / BROOKHAVEN
601-757-1170 OR 601-669-6370

It's not too late to be thinking of your Valentine...

COPIAH FINANCE

has the cash you need for Engagement?
Marriage? Honeymoon? Special Occasion?
Whatever it may be, come in and talk to one of our staff.

601-894-3271

We are located across from the Train Depot in downtown Hazlehurst.



GENTIVA®
home health
Great healthcare has come home®
601-833-6999
www.gentiva.com

Wesson News

Like us on Facebook

www.facebook.com/WessonNews



PICKET FENCES
Peewee Pennington or Casey Martin

We offer In-House Monogramming, Embroidery, and Vinly & Glitter lettering decals for any occasion.

Arriving soon! New line of *Matilda Jane Clothing*

1383-A Union St Ext in Brookhaven 601-990-2372

QUICK. EASY. TRUSTED

Come in today for a quick oil
change and great service!

300 HWY 51 South
Brookhaven, MS
601-833-2065

Store hours:
Mon-Fri: 7:30am – 5:30pm
Saturday: 7:30am – 2pm
Sunday Closed



Community Calendar

February weather forecast: *The Old Farmers Almanac* calls for an average temperature of 46 degrees F (1 degree below average) and precipitation of 4 inches (1 inch below average).

FEBRUARY 10

Veterans of Foreign Wars (VFW) and VFW Auxiliary Post 2618 meet. \$5 for meal. VFW Hall on Industrial Park Road, Brookhaven. 5:30 p.m.

Exhibit of works by Amy Walters and Melanie Eubanks presented by Co-Lin Fine Arts Department. Mutton Gallery on Co-Lin campus. Runs through February. Monday-Friday 8 a.m.-4 p.m. For more information contact Janet Smith at janet.smith@colin.edu or 601-643-8482.

A Night of Originals. Authors, poets, story-tellers, and song writers from Co-Lin and the wider area arts community will share their original works. Free. This is not a competition. No awards will be presented. Co-Lin Fine Arts Auditorium. 7 p.m.

FEBRUARY 12

Wesson Lions Club meeting. Conference Room at Co-Lin student cafeteria building. 6:30 p.m.

FEBRUARY 13

Institute for Learning in Retirement. "Souper Day" lunch and movie, *My Dog Champion*. \$5.00. Co-Lin Thames Center. 11 a.m.

Co-Lin football tryouts. H. L. Stone Stadium on Co-Lin campus. Also on February 18. \$20 tryout fee. 1 p.m. Call the football office for details at 601-643-8347.

Valentine's Dance for students in grades four to six. Fundraiser for High School Chorus. \$5.00 per person. Wesson Attendance Center. 6 p.m.

FEBRUARY 14

Valentine's Day

National Rifle Association Basic Pistol and Mississippi State Enhanced Carry class conducted by the Southwest Mississippi Gun Club and the Mississippi Firearm Owners Association. Free. Southwest Gun Club Range, Edna Drive, McComb. 8:30 a.m. Contact Doug Bowser at dougbowser@cableone.net or 601-341-8797 for information.

FEBRUARY 16

President's Day

Beginner clogging classes for persons of all ages beyond age 5 are held every Monday night. A small fee is charged each month. Brookhaven Recreation Department on Highway 51. Call 601-833-3791 for information.

FEBRUARY 17

Mardi Gras

FEBRUARY 19

Fifty Plus Club meets. Daphne Landress Johnson and the Wesson High School Choir will provide entertainment. Anderson Building on Co-Lin campus. 10:30 a.m.

Institute for Learning in Retirement. Workshop - "Discovering Your Cell Phone. Co-Lin Thames Center. 12:30 p.m.

Brookhaven Regional Arts Guild (BRAG) meets. Lemanedi in downtown Brookhaven. 5:30 p.m.

American Legion Post #79 meets. American Legion Lodge on Main Street, Wesson. 6:30 p.m.

New car club. Wesson Fire Department. 6:30 p.m. Call 601-277-3345 for information.

FEBRUARY 23

Blood drive every second and fourth Monday. King's Daughters Medical Center Hospital Annex. 1 p.m. to 6 p.m. Call 800-817-7449 for information.

FEBRUARY 26

Institute for Learning in Retirement. Day trip to New Orleans. \$80.00. Departs Co-Lin Thames Center at 7 a.m.

Wesson Lions Club meeting. Conference Room at Co-Lin student cafeteria building. 6:30 p.m.

FEBRUARY 27

African American History celebration and program. Wesson Attendance Center Old Gymnasium. 9 a.m.

MARCH 3

Habitat for Humanity, a Christian ministry dedicated to eliminating poverty housing by building homes that are sold with no-interest loans, meets. Easthaven Baptist Church, Brookhaven. 5:30 p.m.

Wesson Board of Aldermen meet. 6 p.m. Wesson City Hall

MARCH 5

Institute for Learning in Retirement. Luncheon. Entertainment provided by Co-Lin Jazz Band. \$8.00. Co-Lin Thames Center. 10:30 a.m.

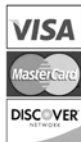
MARCH 9

Co-Lin Spring Break starts, running through March 13.

Email Community Calendar items to
bobarnold@wessonnews.com

ROSS JACKSON PLUMBING

Your Complete Plumbing Source
For Over 50 Years.



1506 Beeson Drive NE
Brookhaven, MS 39601

Office: 601-833-4790
Fax: 601-835-2851

Mill Town Mall

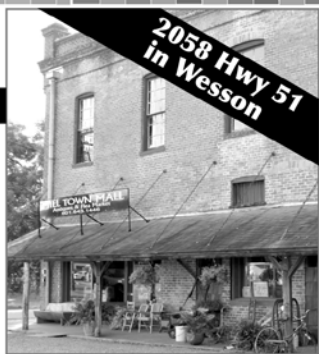
Over 50 Vendor Booths & 15,000 sq. ft. of Merchandise

Antiques, Collectibles & Flea Market Items
Also Featuring New Corsacana Bedding

Something for Everyone
New Stock of Knives

9 a.m. – 5 p.m. Monday – Saturday

601-643-1446



Lowery, Payn, and Leggett

Certified Public Accountants

ACCOUNTING, TAX, AND AUDITING SERVICES

Patrick E. Lowery, CPA

Sharon E. Payn, CPA

Stacy B. Leggett, CPA

601-833-1456 • FAX 601-833-9896

207 SOUTH RAILROAD AVENUE • BROOKHAVEN

*Ministering to the Community
& Surrounding Areas for over 10 years*

Riverwood

Family Funeral Service, Memorial Park and Cremation Service

Serving your family with Christian values



Along with offering the most spacious facility in the area, we also offer the most affordable packages for your funeral service needs.

- Honoring ALL existing pre-arrangements and insurance policies
- Honoring ALL packages by other funeral providers
- Call us and let us personalize a pre-arrangement for you!
- Ask us about our Promotional Packages & Pricing

We also offer: • On-Site Crematory Service • Memorial Park Lots & Markers

Locally Family Owned

601-833-6680 • www.riverwoodfamily.com

Heart health starts with numbers knowledge

By Guest Columnist
Dr. Stephanie Duguid

Many conditions affect heart health and many factors — some of which you can control and others which you cannot — affect those conditions. There are heart attacks, arrhythmias (abnormal heart rhythms), cardiomyopathy (heart muscle issues), and congenital defects (conditions you have at birth) which directly affect the heart. And there are factors such as cholesterol, diabetes, and high blood pressure, among other conditions, which can lead to heart disease, heart attack, or stroke.

All this is the focus of Heart Month during February geared to promoting better understanding of heart health and helping people improve it. You can't control age, heredity, and gender, which are related to your cardiovascular status, but you can take steps to improve your heart health by controlling diet, exercise, smoking, and alcohol consumption



Special to Wesson News

in addressing heart disease related factors:

- **Cholesterol**, a waxy, fat-like substance made in the liver and other cells, for example, is found in certain foods such as dairy products, eggs, and meats. You need some cholesterol to function properly, as it helps to support cell walls and produces hormones and bile that assists in digesting fat. You can control the good cholesterol and bad cholesterol in your diet. Lean fats found in avocados and nuts tend to be good cholesterol, while fats in red meat and fried foods tend to be bad cholesterol. You only need a limited amount of either type, however, and too much cholesterol is related to the buildup of plaque — a thick, hard substance — in your arteries, which can impede blood flow, lead to atherosclerosis (hardening of the arteries), and cause heart disease with high blood pressure, angina (chest pain), and even heart attacks.
- **Type 2 diabetes**, a condition characterized by high glucose (sugar) levels which insulin cannot effectively regulate, is also associated with heart disease. In fact, individuals with type 2 diabetes are at least 65 percent more likely to die from some form

of heart disease or stroke. Adults with diabetes are two to four times more likely to have heart disease or a stroke than adults without diabetes.

- **High blood pressure**, a condition in which blood places abnormally elevated pressure against the walls of your arteries when your heart is pumping, can also lead to heart related issues and stroke. Plaque buildup, salt intake, smoking, stress, another other controllable factors, cause high blood pressure.

Controlling these factors begins with knowing they need to be controlled.

KNOWING YOUR NUMBERS.

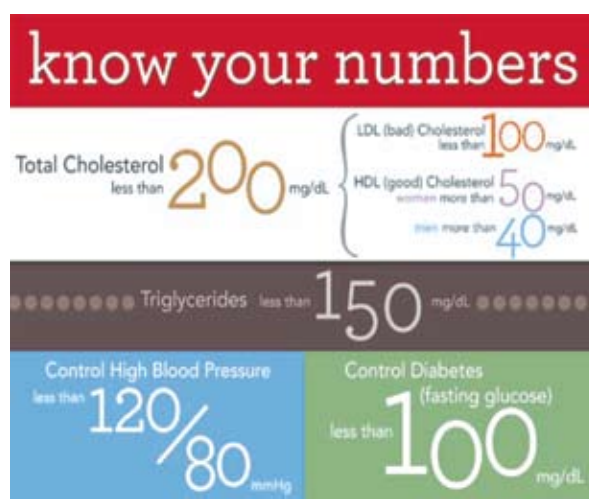
Total cholesterol should be less than

200 mg/dL. LDL (bad) cholesterol should be less than 100 mg/dL, while HDL (good) cholesterol should be more than 50 mg/dL. Consult your doctor. Your fasting blood levels first things in the morning should be less than 100 mg/dL. If they are consistently higher than 100mg/dL, it could indicate diabetes. Check with your doctor. Blood pressure — read as the systolic pressure (heart contracting) over the diastolic pressure (heart at rest) — should be some number less than 120 over some number less than 80. Anything over 120/80 should be discussed with your physician.

Educate yourself. Ask questions. Understand how conditions are related.

See your doctor on at least an annual basis. For more information, visit the American Heart Association web site at www.heart.org.

EDITOR'S NOTE: Dr. Stephanie Duguid is Assistant Dean of Academic Instruction and the Health, Physical Education, and Recreation Division Chair at Co-Lin. She is also an athletic trainer and nutrition specialist and has been teaching courses related to those two areas as well as practicing what she preaches for more than 20 years.



Special to Wesson News

Town's food providers to offer dishes at taste-of-the-town event

Wesson News

The foods of Wesson will be showcased at a special Chamber of Commerce event next month.

Wesson restaurants, caterers, and other eateries and food services will bring samplings of the signature dishes on their menus to a Meet & Greet at the Old School Community Center hosted by the local Chamber from 6 p.m. to 8 p.m. on Thursday, March 19.

Wesson Chamber of Commerce president Marilyn Britt expects a large crowd for the informal party-like taste-of-the-town event.

The Co-Lin Jazz Ensemble under

the direction of Juanita Proffitt, the college's assistant director of bands, will provide entertainment during the affair.

The event, which is free to the public, is "a way for our community's commercial food providers to not only promote themselves, but give back to their customers and show appreciation for their patronage," Britt said.

"Wesson has wide array of eating choices for varied tastes and occasions. This is a unique opportunity to get acquainted with the foods of Wesson and the people behind them, and have a good time with other town residents."

Little Marie Photography
Wesson & Bookhaven

Traditional & Contemporary Family Portraits
Weddings ♦ Reunions ♦ Special Events
Sweet 16s ♦ Engagement Parties ♦ Receptions

Will Travel Regionally

Visit Little Marie Photography on Facebook facebook.com/littlemariephotography
littlemariephotography@yahoo.com

Pete's INTERIORS • Carpet • Ceramic
Vinyl • Hardwood
Custom Showers

**We are now offering Laser Precision
Cut Slabs for Counter Tops.**

**Come by, inspect our samples,
and talk with our specialist.**

1342 Hwy. 51N. • Brookhaven, MS 39601
601-835-1703